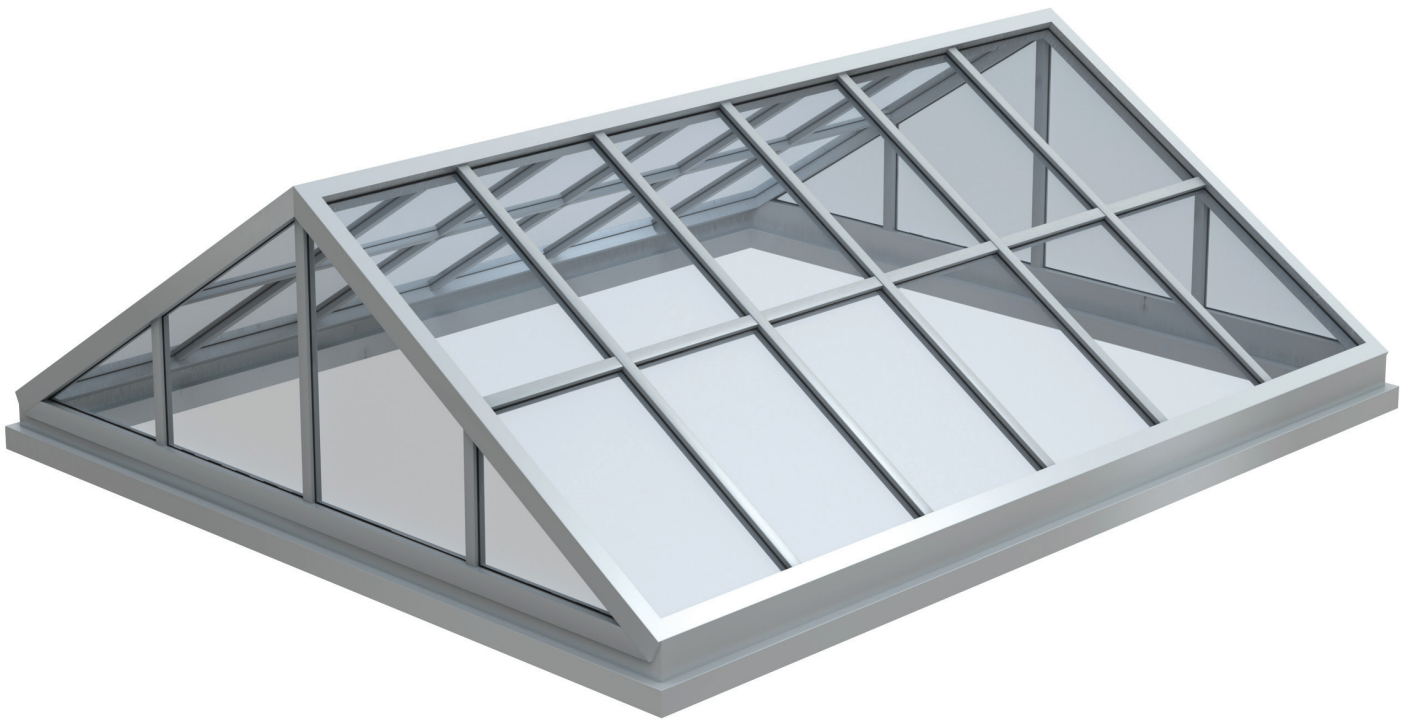




KlearSky™

Product Data Sheet

Custom Metal Framed Glass Skylights

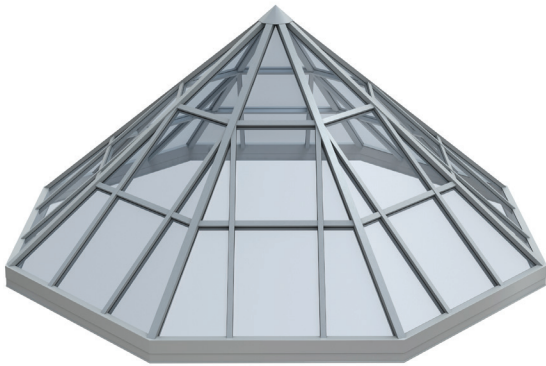


Application

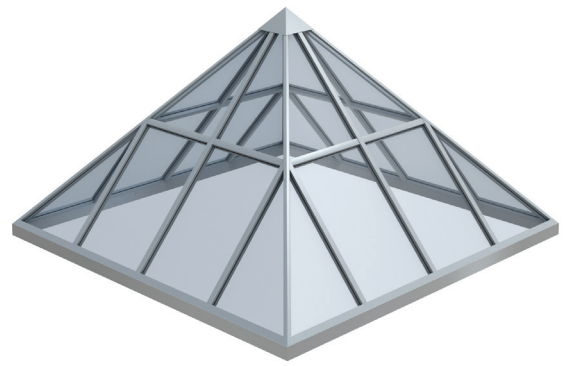
Kingspan Light + Air utilizes state-of-the-art facilities to manufacture KlearSky™ systems to your exact specifications. Our design, engineering and fabrication teams have a vast amount of technical knowledge and experience, and are focused on creating dependable, high performance metal framed skylight solutions.

Beyond the standard configurations shown below, we also offer completely customized sizes and shapes, as well as a wide array of glazing options to meet local energy code performance requirements. Additionally, we offer a range of frame finish options including powder coat, anodized finishes or fluoropolymer paint, in both standard and custom colors. (AAMA 2603/2604/2605 compliant finishes.)

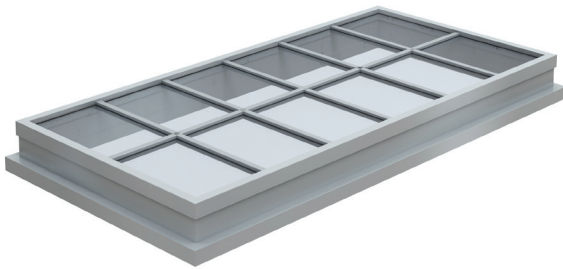
Sample configurations:



Polygon



Pyramid

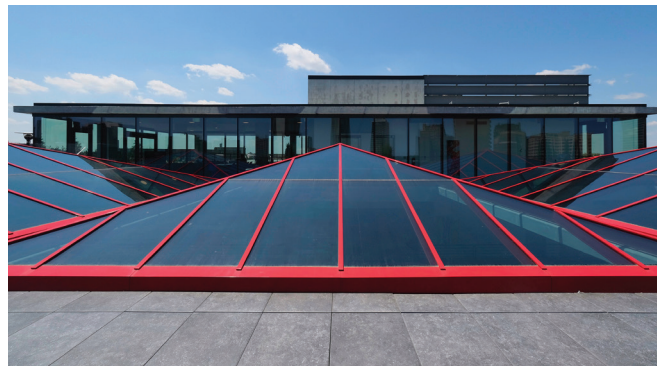


Single Slope



Ridge

*Additional configurations, including segmented barrel vaults, are available. Custom designs are also available. Contact us for details.



Technical Specifications

ASTM 283	Air infiltration: <0.03 cfm/ft ² @ 1.57 psf <0.05 cfm/ft ² @ 6.27 psf
ASTM E330	Designed to project specific design loads at a deflection criteria of L/175
ASTM E331	No water penetration at 15psf

Features

1. Extruded 6005-T5 aluminum frame
2. Standard or thermally improved options
3. Long span capabilities of approx. 22' @ 1:12 minimum pitch for single slopes and 40' @ 2:12 minimum pitch for ridge assemblies (longer spans may be available - contact us for additional information)
4. Constructed of recyclable materials (glass and aluminum)
5. QuickLink™ technology for fast purlin assembly
6. Internal guttering system for moisture management

Options

1. Multiple glazing options available, including high performance insulating glass and laminated glass, in thicknesses from 5/16" to 1-5/16" (Contact us for specific information on glazing options and availability)
2. Custom/non-standard designs available - contact us with specific project requirements
3. Multiple finish options available - paint or anodize (custom colors available upon request) - to meet AAMA 2603, 2604 and 2605 (Contact us for additional information on finish options and availability)

Warranty

For a period of ten (10) years from the date of purchase, Kingspan Light + Air warrants that its KlearSky™ skylights will be free from defects in material and workmanship. KLA will also provide a two (2) year labor warranty (limitations apply) on KlearSky™ skylights. Please contact us for sample warranties and additional information.

Kingspan Light + Air (KLA) is engaged in continuing research to improve its products. Therefore, the right is reserved to modify or change the data provided in this Technical Summary without notice. This is descriptive literature and does not constitute warranties, expressed or implied. For statement of warranty, contact KLA. The above tests were performed and verified by certified independent third parties. If you have questions on a specific test or product, please contact a KLA Representative. Kingspan Light + Air does not assure compliance with any plans or specifications and it remains the responsibility of the customer to confirm compliance of the product with applicable local, state, and national codes and other laws or regulations.

Light Transmittance & Thermal Properties*

Glazing Makeup	VT	SHGC	U-Factor
Glass Glazing	Contact us for performance information.*		

*Because of the wide range of glazing options and related performance data, please contact Kingspan Light + Air for information related to your specific glazing and system choices.



Kingspan Light + Air

North American Headquarters

28662 N. Ballard Dr.

Lake Forest, IL 60045

Toll Free: +1 800 759 6985

T: +1 847 816 1060

F: +1 847 816 0425

E: info@kingspanlightandair.us

www.kingspanlightandair.us



To ensure you are viewing the most recent and accurate product information, please scan the QR code above

Care has been taken to ensure that the contents of this publication are accurate, but Kingspan Limited and its subsidiary companies do not accept responsibility for errors or for information that is found to be misleading. Suggestions for, or description of, the end use or application of products or methods of working are for information only and Kingspan Limited and its subsidiaries accept no liability in respect thereof.

For the product offering in other markets please contact your local sales representative or visit kingspan.com

© Kingspan and the Lion Device are Registered Trademarks of the Kingspan Group plc in the US, Canada and other countries.

© Kingspan Light + Air

MKT-PDS-0002-2401

