

# Installation Guide

## Kooltherm<sup>®</sup> K5

### External Wall Board

External Insulation for Masonry Walls and Polymer Modified Renders



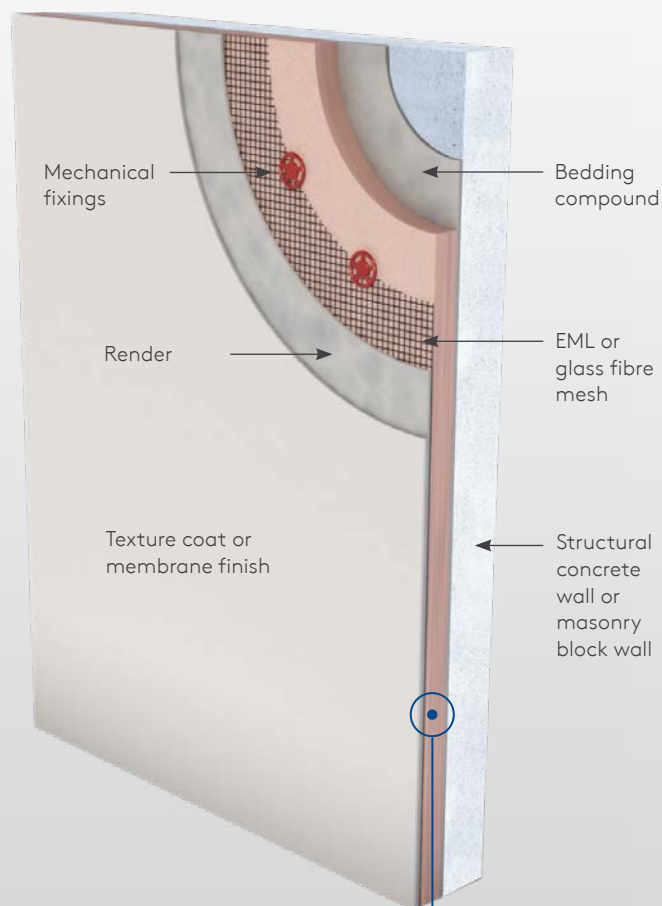
# Kooltherm® K5 External Wall Board

## Product Description

### Kooltherm®

Kooltherm K5 is an external wall insulation board for masonry walls, suitable for use behind traditional and lightweight modified polymer renders. The boards can be retrofitted externally to existing properties without disturbing the occupants as all work is done from the outside.

Kooltherm K5 External Wall Board is manufactured with a blowing agent that has zero Ozone Depletion Potential (ODP) and low Global Warming Potential (GWP).



- Rigid thermoset phenolic insulation
- Fibre-free, closed cell insulation core
- Suitable for use behind traditional and lightweight polymer modified renders
- Transforms and upgrades the appearance of existing buildings
- Resistant to the passage of water vapour
- Easy to handle and install
- Ideal for new build and refurbishment
- No CFC or HCFC used in manufacture
- NZBC and AS/NZS 4859.1:2018 compliant

Kingspan Kooltherm®  
K5 External Wall Board

Figure 1. Insulated Render System on  
Concrete and Masonry Block Wall

Fibre-free  
Core

# Kooltherm® K5 External Wall Board Installation Instructions

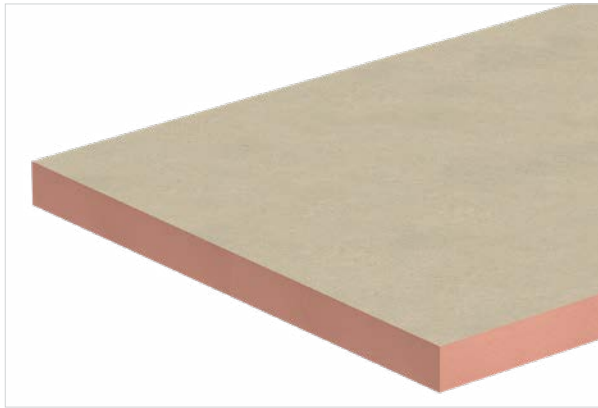


Figure 2. Kooltherm K5 External Wall Board

Kooltherm K5 External Wall Board should only be installed by approved installers and using the render supplier's installation instructions. The chosen render system must be pre-trialed and tested to ensure compatibility with the Kooltherm K5 External Wall Board. It is recommended that polymer modified renders be used for flexibility and adhesion, and that total render coating be at least 6 mm thick for system integrity.

For more information please call Technical Services on 0800 806 595 or email [info@kingspaninsulation.co.nz](mailto:info@kingspaninsulation.co.nz)

## Handling and Storage

### Storage

The polythene packaging of Kingspan Kooltherm should not be considered adequate for long term outdoor protection. Ideally, boards should be stored inside a building. If, however, outside storage cannot be avoided, then the boards should be stacked clear of the ground and covered with a polythene sheet or weatherproof tarpaulin. Boards that have been allowed to get wet should not be used.

Kooltherm K5 External Wall Board should be protected from getting wet during periods of inclement weather prior to the application of the weatherproof render.

### Resistance to Solvents

The insulation core is resistant to short-term contact with petrol and with most dilute acids, alkalis and mineral oils. However, it is recommended that any spills be cleaned off fully before the boards are installed. Ensure that safe methods of cleaning are used, as recommended by suppliers of the spilt liquid. The insulation core is not resistant to some solvent-based adhesive systems, particularly those containing methyl ethyl ketone. Adhesives containing such solvents should not be used in association with this product. Damaged boards or boards that have been in contact with harsh solvents or acids should not be used.



Figure 3. Insulated Render System on a Steel-framed Wall over a Cavity



Figure 4. Insulated Render System on a Timber-framed Wall over a Cavity

# Kooltherm<sup>®</sup> K5 External Wall Board Installation Instructions

---

## Occupational Health & Safety

Kingspan Insulation products are chemically inert and safe to use. A Product Safety Information Sheet is available from Kingspan Insulation NZ Ltd.

Installation must be in accordance with AS 3999:2015 Bulk Thermal Insulation Installation and AS/NZS 3000:2018 Electrical Installations (Wiring Rules).



## Product Warranty

Standard Kingspan Insulation Warranty applies. Refer to Kingspan Insulation Warranty statement for further details. This is available online at [kingspaninsulation.co.nz](http://kingspaninsulation.co.nz); or call us on 0800 806 595; or email [info@kingspaninsulation.co.nz](mailto:info@kingspaninsulation.co.nz)

Kingspan Insulation NZ Limited (NZBN 9429045930393), reserves the right to amend product specifications without prior notice. The information contained in Kingspan's literature is given in good faith and based on good building practice but are not an exhaustive statement of all relevant information and are subject to any conditions contained in the Warranty. Recommendations for use should be verified as to the suitability and compliance with actual requirements, specifications and any applicable laws and regulations. All product dimensions and performance claims are subject to any variation caused by normal manufacturing process and tolerances.

Furthermore, as the successful performance of the relevant system depends on numerous factors outside the control of Kingspan (for example quality of workmanship and design), Kingspan shall not be liable for the recommendations in that literature and the performance of the Product. For other applications or conditions of use, Kingspan Insulation offers a Technical Advisory Service, the advice of which should be sought for uses of Kingspan Insulation products that are not specifically described herein. Please check that your copy of the literature is current by contacting us or visiting [www.kingspaninsulation.co.nz](http://www.kingspaninsulation.co.nz) E&OE

