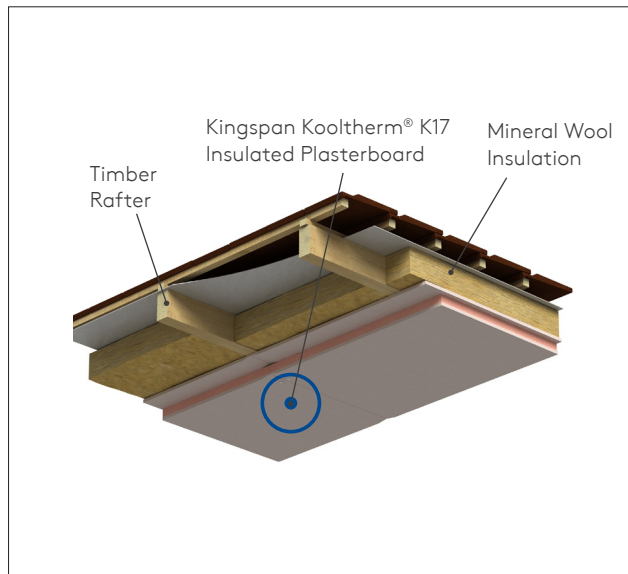
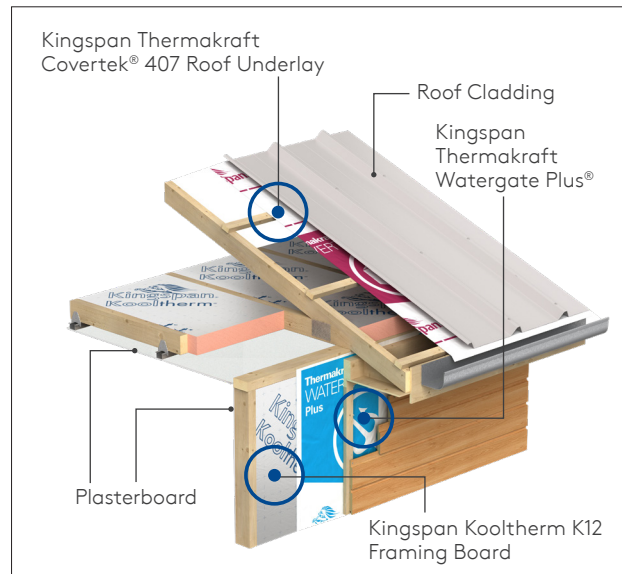


Kingspan 7+ Star Residential Solution: Roof



Continuous Insulation for Timber Frame for Skillion Roof



Rigid Board Insulation between Studs for Timber Frame for Pitched Roof

How to achieve a 7+ Star Energy Rated Home by Insulating Roofs/Ceilings?

- Using Kingspan Kooltherm K12 Framing Board between the horizontal ceiling battens in a timber/steel frame system can result in achieving a higher R-value compared to standard glasswool batts. Various thicknesses of Kingspan Kooltherm K12 Framing Board can achieve an R-value as high as R7.2*.
- By fitting the Kooltherm K17 Insulated Plasterboard as continuous insulation on internal ceiling applications in conjunction with conventional glasswool insulation, a

higher R-value can be achieved. Furthermore it also reduces thermal bridging especially when steel frames are used.

- In combination with Kingspan Thermakraft Covertex 407 and Watergate Plus vapour permeable wraps, your home will be warmer in winter, cooler in summer and drier all year round.

*These are declared product R-values for these products.



Kingspan Kooltherm
K12 Framing Board



Kingspan Kooltherm
K17 Insulated Board



Kingspan Thermakraft
Covertex 407 Roof Underlay



Kingspan Thermakraft
Watergate Plus

Insulation Pack Sizes

Kingspan Kooltherm K12 Framing Board

80mm x 1200mm x 403mm (6 x per pack)

80mm x 1200mm x 413mm (6 x per pack)

80mm x 1200mm x 553mm (6 x per pack)

80mm x 1200mm x 563mm (6 x per pack)

Membranes Pack Sizes

Kingspan Thermakraft Watergate Plus

1370mm wide 36.5m long 50m² coverage*

1500mm wide 30m long 45m² coverage*

2740mm wide 30m long 82m² coverage*

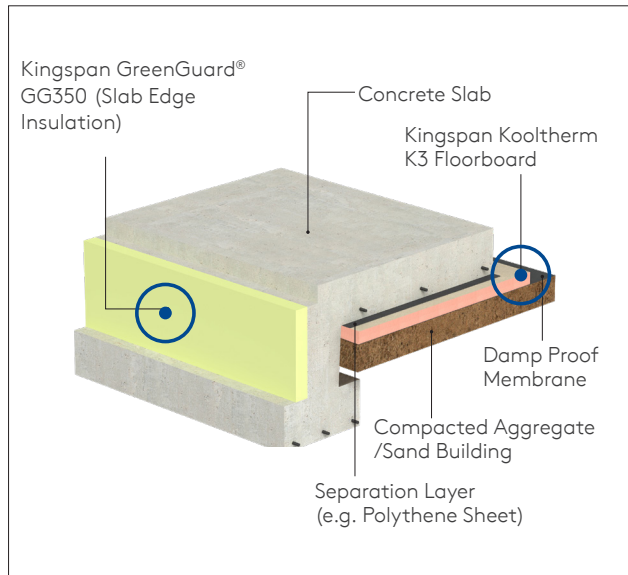
3000mm wide 30m long 90m² coverage*

Kingspan Thermakraft Covertex 407

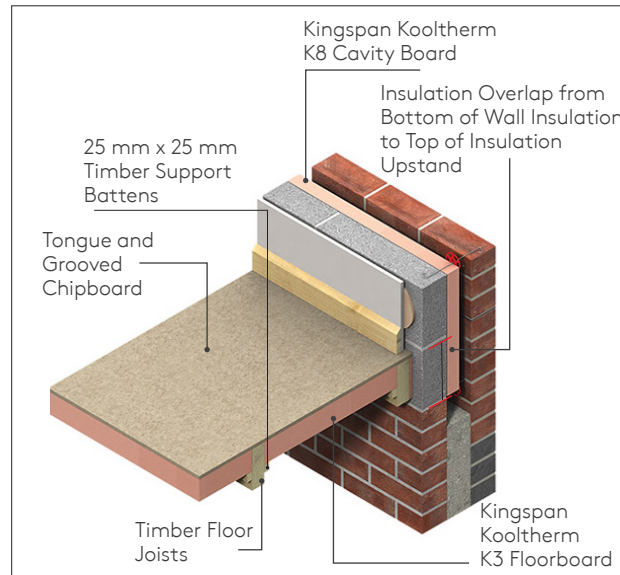
1250mm wide 40m long 50m² coverage*

*Note: m² is the roll size. For actual coverage, allow for laps and joints.

Kingspan 7+ Star Residential Solution: Floor



Underfloor and Slab Edge Insulation



Kingspan K3 Floorboard



Kingspan Kooltherm K3 Floor Board



Kingspan GreenGuard GG350

Insulation Pack Sizes

Kingspan Kooltherm K3 Floorboard
25mm x 2400mm x 1200mm (12 x per pack)
50mm x 2400mm x 1200mm (6 x per pack)
Kingspan GreenGuard GG350 (Slab Edge Insulation)
40mm x 2400mm x 300mm (5 x per pack)

How to achieve a 7+ Star Energy Rated Home by Insulating Floors?

- To increase the thermal performance of your home, start from the ground with Kingspan Kooltherm K3 Floorboard 25mm R1.1* or 50mm R2.3*.
- By placing the Kingspan GreenGuard GG350 slab edge insulation vertically around the perimeter of the concrete slab, it separates the slab from the soil or earth. This robust detail improves the energy efficiency and comfort of the home.

*These are declared product R-values for these products.

Scan the QR Code to Book a One-on-One!

